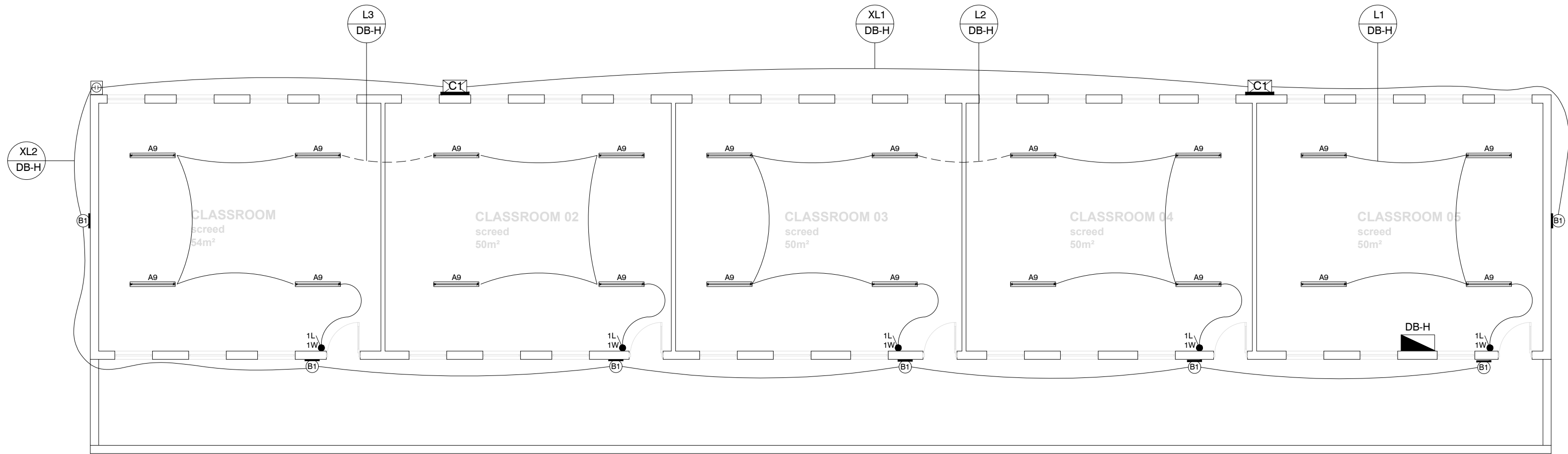
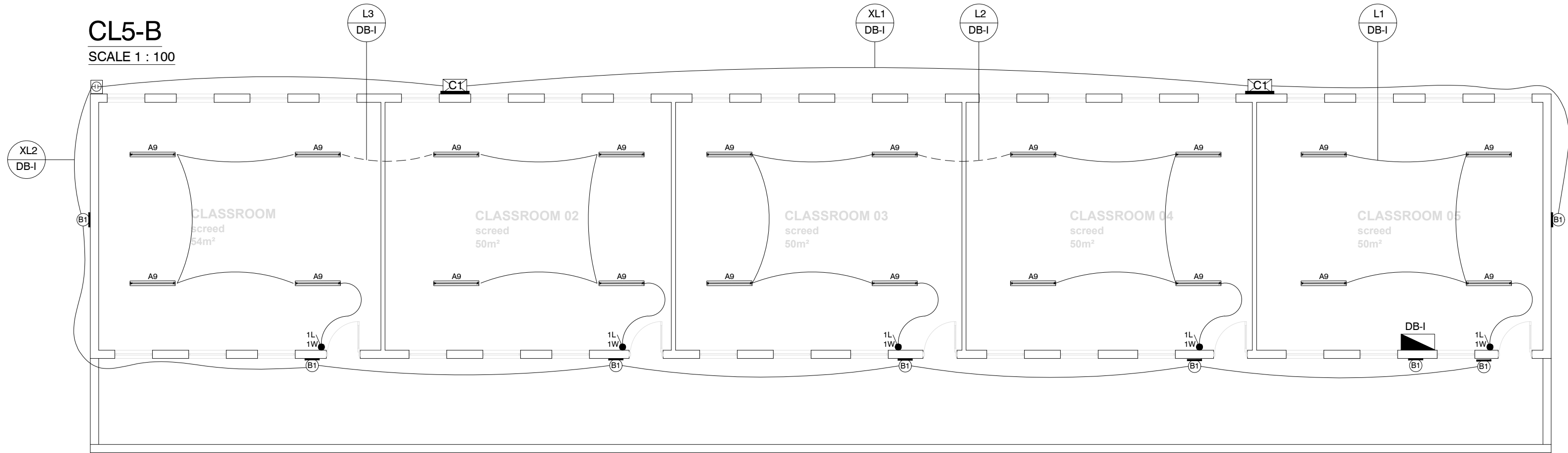


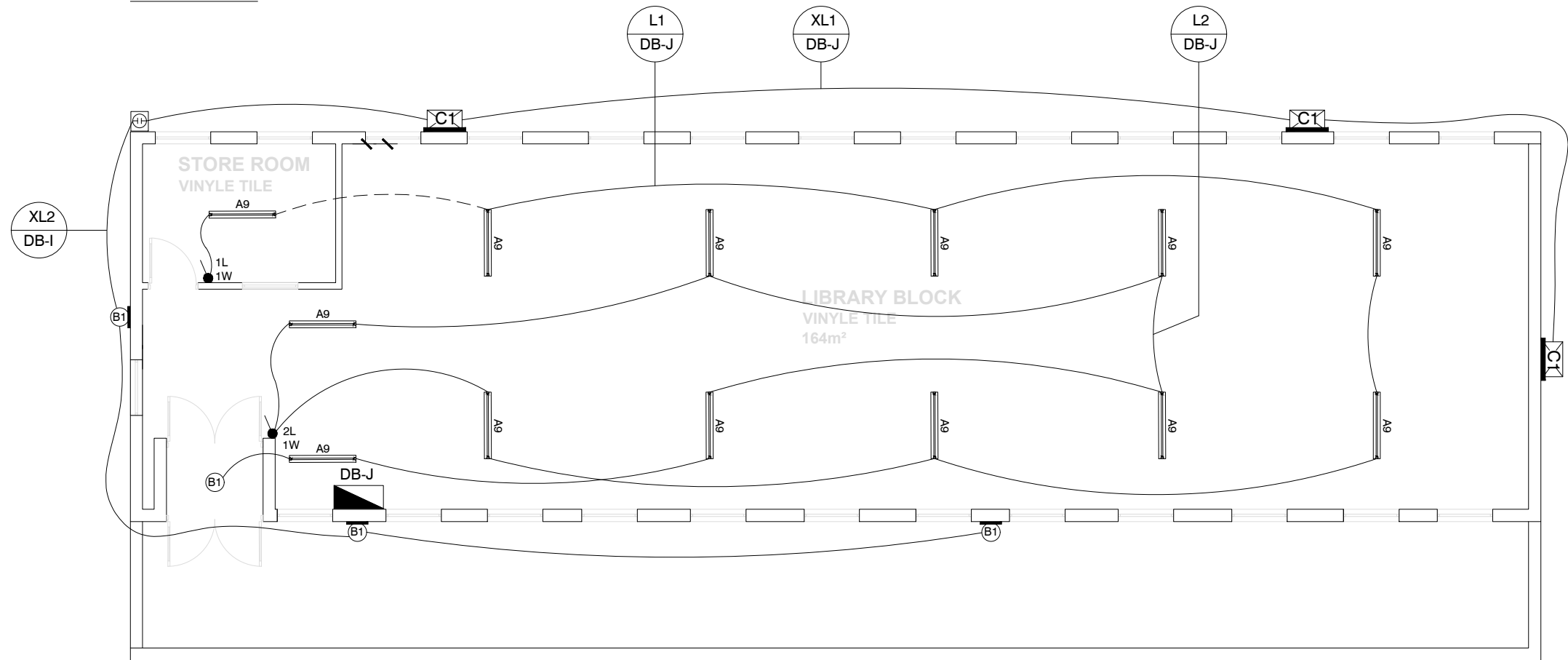
CL5-A  
SCALE 1 : 100



CL5-B  
SCALE 1 : 100



CL5-C  
SCALE 1 : 100



LIBRARY  
SCALE 1 : 100

LEGEND	
	DISTRIBUTION BOARD MOUNTED 2200mm A.F.F.L. TO TOP OF DB
	TYPE 9 SURFACE MOUNTED IP65 DIE-CAST ALUMINIUM BODY LUMINAIRE (1200mm) COMPLETE WITH LED 20W LAMP (± 2800LUMEN PER LAMP) 4000K, MINIMUM OF 25 000 OPERATING HOURS.
	TYPE B1 SURFACE MOUNTED BULKHEAD COMPLETED WITH ELECTRONIC GEAR AND LED 20W (± 2000LUMEN) 4000K, MINIMUM OF 50 000 OPERATING HOURS.
	TYPE C1 WALL MOUNTED FLOODLIGHTS 80W (± 10000LUMEN) 4000K, MINIMUM OF 100 000 OPERATING HOURS.
	1 LEVER 1 WAY LIGHT SWITCH MOUNTED 1400mm A.F.F.L.
	2 LEVER 1 WAY LIGHT SWITCH MOUNTED 1400mm A.F.F.L.
	IP66 WEATHER PROOF 1 LEVER 1 WAY LIGHT SWITCH MOUNTED 1400mm A.F.F.L.
	PHOTOCELL

NOTES:

REFERENCE DRAWING

NO.	DRAWING NUMBER	DESCRIPTION
1	3005	DB-A AND DB-B SINGLE LINE DIAGRAM
2	3010	DB-C SINGLE LINE DIAGRAM
3	3011	DB-D AND DB-E SINGLE LINE DIAGRAM
4	3011	RETICULATION LAYOUT

REVISION

NO.	DATE	REVISION	REV. BY
1	15/12/2022	ISSUED FOR TENDER	L MKHIZE

LODEMANN HOLDINGS SIGNATURES			
DESIGNED	NAME	SIGNATURE	DATE
DRAWN BY	L. MKHIZE		
ENGINEER	T. MBATHA		
PROJECT MANAGER	K. BHAT		

CLIENT DEPARTMENT SIGNATURES

FACILITY STAMP

FACILITY MANAGER

INFRASTRUCTURE MANAGER

GENERAL MANAGER

Checked by Professional Consultant  
Name

Signature Date

**SIGPRO**  
ENGINEERING AND PROJECT MANAGEMENT

DBSA  
Development Bank of Southern Africa

NORTHERN REGION

Project:  
**KZN DOE INFRASTRUCTURE DEVELOPMENT AND MAINTENANCE PROGRAMME**

Drawing Description:  
**DLAMVUZO HIGH SCHOOL  
CL5-A, CL5-B, CL5-C & LIBRARY  
LIGHTING LAYOUT PLAN**

Drawn: SIGPRO Date: 02/11/2022

Scale/s:  
**1:100 (A1)**

Consultant Drawing Number:  
**1013-017-3001**

DBSA Drawing number  
**500121952**

Stamped by Plans Approval Committee